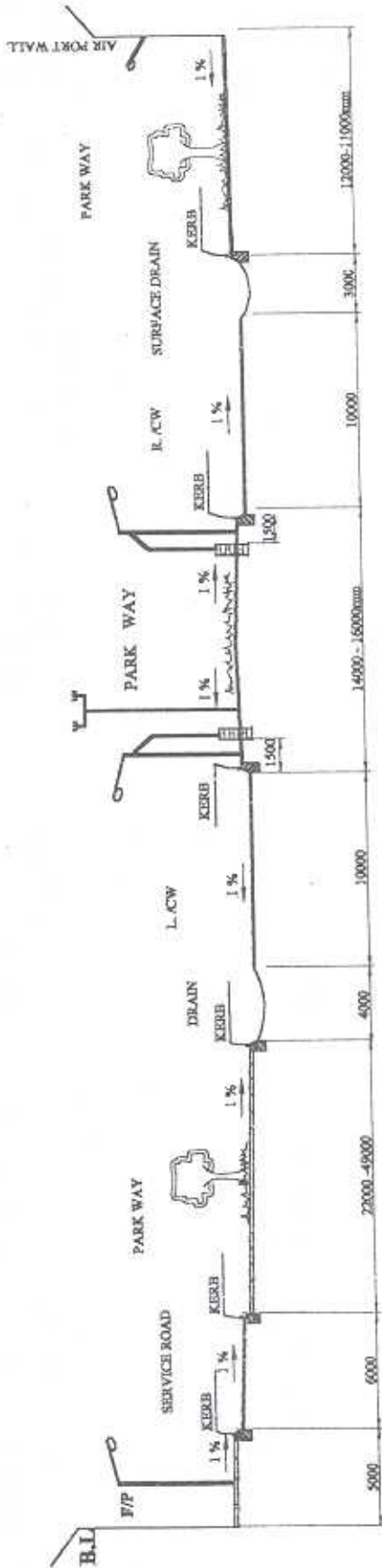


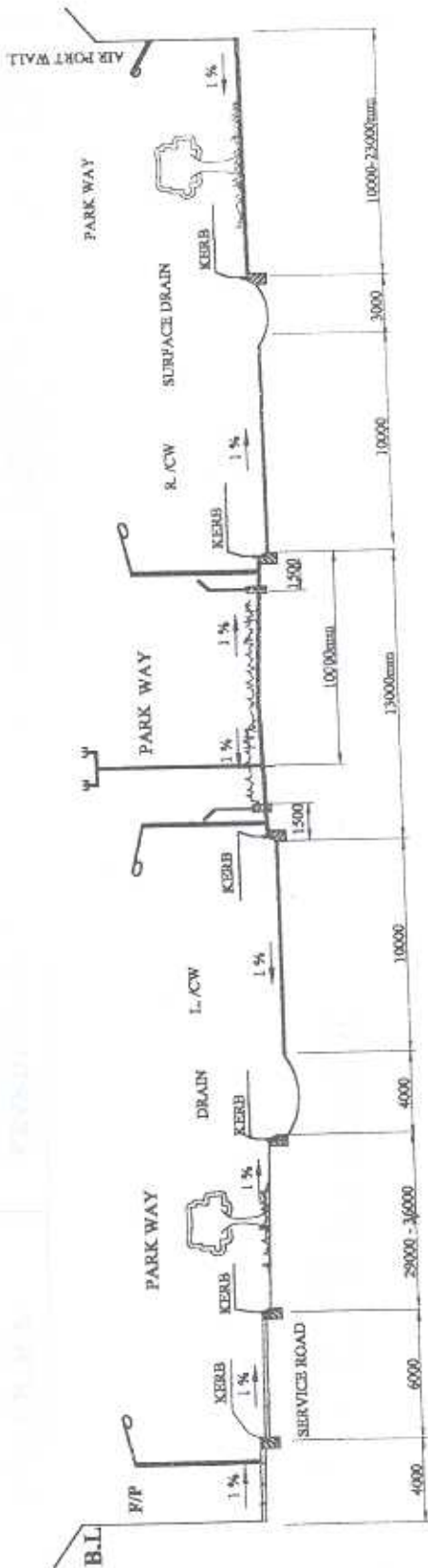
## ملاحق ورسومات

نماذج للتخطيط المقترح لشارع عبید ختم من إتحامه بكبري القوات المسلحة وسانراً  
جنوباً لتقاطعه لمقابلة جامعة أفريقيا



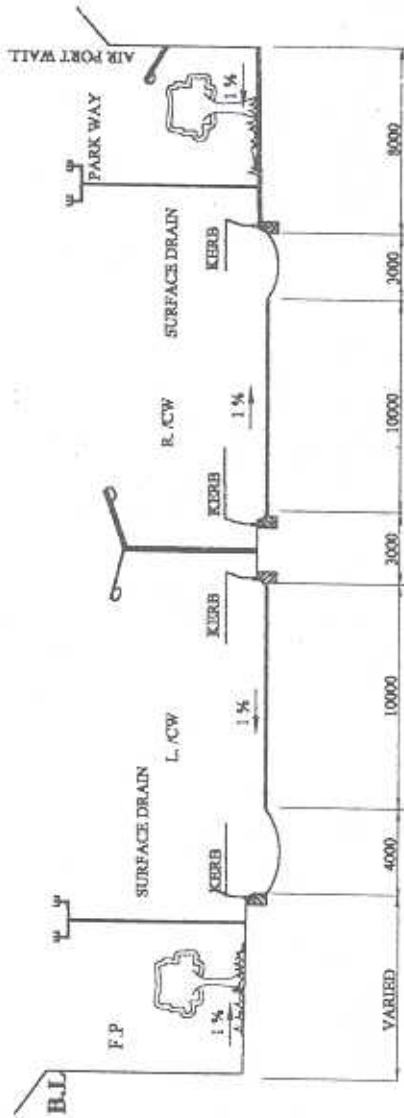
TYPICAL CROSS - SECTION OF STREET AT  
CH. 1+550 - CH. 1+690.

<b>ALAGIB GROUP CONSULTING ENGINEERS</b>	<b>KHARTOUM CENTER DEVELOPMENT AUTHORITY</b>	<b>REHABILITATION OF ROADS AND RAIN WATER DRAINS</b>	Scale :- 1:200	Date :- OCT.2001
			Drawing Title :- <b>OBEAD KHATIM STREET TYPICAL CROSS - SECTION ( DESIGN )</b>	



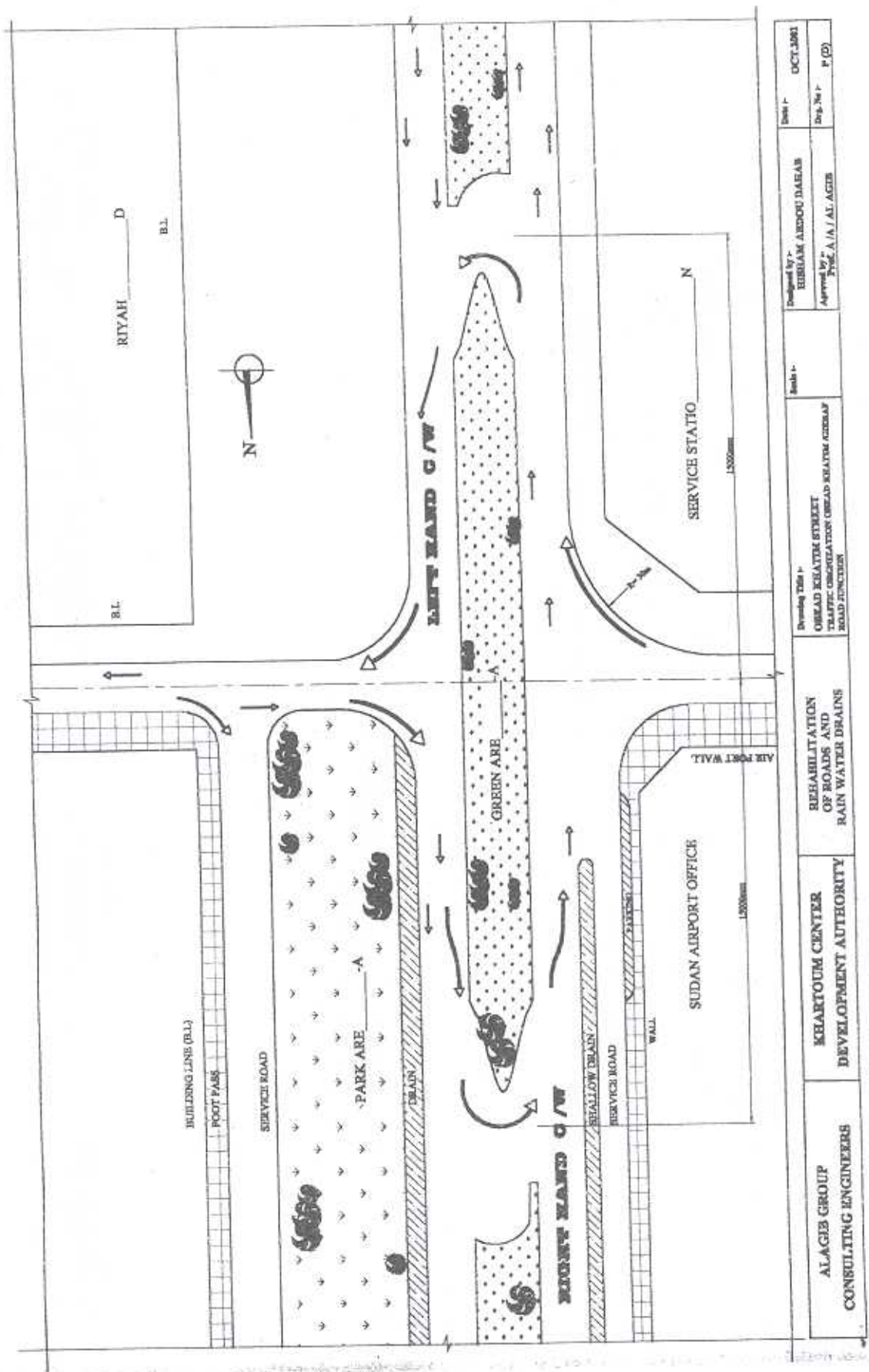
TYPICAL CROSS - SECTION OF STREET AT  
CH. 1+700 - CH. 1+850.

<b>ALAGIB GROUP CONSULTING ENGINEERS</b>	<b>KHARTOUM CENTER DEVELOPMENT AUTHORITY</b>	Drawing Title - <b>OBHAD KHATIM STREET TYPICAL CROSS - SECTION ( DESIGN )</b>	Scale - <b>1:200</b>	Date - <b>OCT 2001</b>
		REHABILITATION OF ROADS AND RAIN WATER DRAINS		



TYPICAL CROSS - SECTION OF STREET AT  
CH. 0+000 - CH. 0+615.

<b>ALAGIB GROUP CONSULTING ENGINEERS</b>	<b>KHARTOUM CENTER DEVELOPMENT AUTHORITY</b>	<b>REHABILITATION OF ROADS AND RAIN WATER DRAINS</b>	Scale :- <b>1:200</b>	Date :- <b>OCT. 2001</b>
			Drawing Title :- <b>ORAD KHATIM STREET TYPICAL CROSS - SECTION ( DESIGN )</b>	
			Draw. No :- <b>C/S(1)</b>	



AL AGIB GROUP CONSULTING ENGINEERS	KHARTOUM CENTER DEVELOPMENT AUTHORITY	REHABILITATION OF ROADS AND RAIN WATER DRAINS	Drawing Title :- OROAD KHALIM STREET TRAFFIC ORGANIZATION OROAD KHALIM STREET ROAD JUNCTION	Scale :-	Designed by :- EHSAB ARDOU DAEAB	Date :- OCT, 2001
					Approved by :- Prof. A. A. / AL AGIB	Dr. No :- P. (2)

## المعالجات المرورية لكبري القوات المسلحة

